

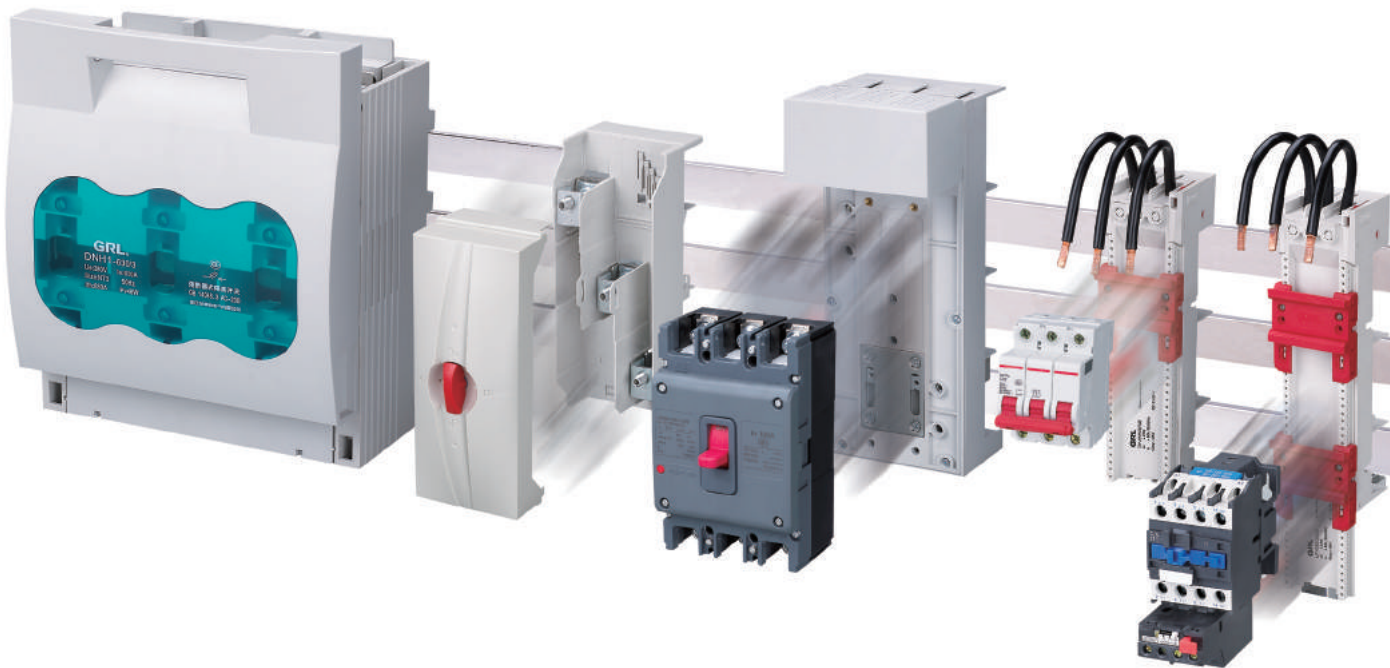
Follow your inclinations  
Connect the infinite

---

# Electrical Connection System

Product Selection Guide

**GRL**



Zhejiang GRL Electric Co.,Ltd. established in 1992, is a professional manufacturer who is specialized in the researches, developments, manufactures and sales of electrical components and accessories including low-voltage busbar system ,low-voltage disconnecter switch, fuse switch disconnecter, knife switch, automatic transfer switch etc.The products are widely used in electricity, construction, photo-voltaic, petroleum, chemical, metallurgical railway and other industries of the low-voltage distribution system and industrial control system.

GRL Electric gives great impetus to lean production, 5S,KPI monitor system, performance management system, on the base of enforce process and standard management thoroughly. According to the management policy "inside strong quality, outside image shaping" ,combining the system construction and humanization management, to build a team with cohesion, knowledge and innovation. With the road of brand strategy, honest cooperation, we go to all out to build our brand GRL to be a well-known brand of low-voltage electric to the domestic and even whole world.

# Contents

## **Switch**

|                          |   |
|--------------------------|---|
| Fuse Switch Disconnecter | 1 |
| Switch Disconnecter      | 5 |

## **Copper Bar**

|                     |   |
|---------------------|---|
| Flat Copper Bar     | 7 |
| Special Copper Bar  | 8 |
| Flexible Copper Bar | 9 |

## **Busbar Adapter**

|                    |    |
|--------------------|----|
| 60MM MCCB Adapter  | 11 |
| 185MM MCCB Adapter | 14 |
| MCB Adapter        | 15 |

## **Connector Terminal**

|                    |    |
|--------------------|----|
| Connector Terminal | 17 |
|--------------------|----|

## **Terminal Clamp Board**

|                      |    |
|----------------------|----|
| Terminal Clamp Board | 18 |
|----------------------|----|

## **Busbar Support**

|                |    |
|----------------|----|
| Busbar Support | 19 |
|----------------|----|



# DNH1

Fuse Switch Disconnecter  
Fixed Type

## Technical Parameters

|                 |  |
|-----------------|--|
| Rated Current   | 16A,32A,63A,100A,125A,160A,200A,<br>250A,315A,400A,500A,630A |
| Rated Voltage   | AC400V/690V,DC500V   |
| Pole            | 3-pole   |
| Busbar Distance | 60mm   |
|                 | For AC&DC applications                                       |
|                 | Multiple frame sizes & installation types                    |
|                 | Flame retardant grade V0                                     |
|                 | For fuse NH00,NH1,NH2,NH3                                    |



# DNH1

Fuse Switch Disconnecter  
Busbar Type

## Technical Parameters

|                 |  |
|-----------------|--|
| Rated Current   | 16A,32A,63A,100A,125A,160A,200A,<br>250A,315A,400A,500A,630A |
| Rated Voltage   | AC400V/690V,DC500V   |
| Pole            | 3-pole   |
| Busbar Distance | 60mm   |
|                 | For AC&DC applications                                       |
|                 | Multiple frame sizes & installation types                    |
|                 | Flame retardant grade V0                                     |
|                 | For fuse NH00,NH1,NH2,NH3                                    |



# DNH7

Fuse Switch Disconnecter  
Fixed Type

## Technical Parameters

|                 |  |
|-----------------|--|
| Rated Current   | 16A,32A,63A,100A,125A,160A,200A,<br>250A,315A,400A,500A,630A |
| Rated Voltage   | AC400V/690V,DC500V   |
| Pole            | 3-pole   |
| Busbar Distance | 60mm   |
|                 | For AC&DC applications                                       |
|                 | Multiple frame sizes & installation types                    |
|                 | Flame retardant grade V0                                     |
|                 | For fuse NH00,NH1,NH2,NH3                                    |



# DNH7

Fuse Switch Disconnecter  
Busbar Type

## Technical Parameters

|                 |  |
|-----------------|--|
| Rated Current   | 16A,32A,63A,100A,125A,160A,200A,<br>250A,315A,400A,500A,630A |
| Rated Voltage   | AC400V/690V,DC500V   |
| Pole            | 3-pole   |
| Busbar Distance | 60mm   |
|                 | For AC&DC applications                                       |
|                 | Multiple frame sizes & installation types                    |
|                 | Flame retardant grade V0                                     |
|                 | For fuse NH00,NH1,NH2,NH3                                    |



# HR6

## Fuse Switch Disconnecter

### Technical Parameters

|               |   |
|---------------|---|
| Rated Current | 16A,32A,63A,100A,125A,160A,200A,250A,315A,400A,500A,630A,800A |
| Rated Voltage | AC400V/690V   |
| Pole          | 3-pole  |
|               | Copper T3   |
|               | Multiple frame sizes & installation types                     |
|               | Flame retardant grade V0                                      |
|               | For fuse NH00,NH1,NH2,NH3                                     |



# HGLR

## Switch Disconnecter Fuse

### Technical Parameters

|               |  |
|---------------|--|
| Rated Current | 16A,32A,63A,100A,125A,160A,200A,250A,315A,400A,500A,630A |
| Rated Voltage | AC400V/690V,DC500V                                       |
| Pole          | 3-pole & 4-pole  |
|               | Copper T3  |
|               | Multiple frame sizes & installation types                |
|               | Flame retardant grade V0                                 |
|               | For fuse NH00,NH1,NH2,NH3                                |



# HH15

## Switch Disconnecter Fuse

### Technical Parameters

|               |   |
|---------------|---|
| Rated Current | 16A,32A,63A,100A,125A,160A,200A,250A,315A,400A,500A,630A,800A,1250A |
| Rated Voltage | AC400V/690V   |
| Pole          | 3-pole & 4-pole   |
|               | Copper T3   |
|               | Multiple frame sizes & installation types                           |
|               | Flame retardant grade V0  |
|               | For fuse NH00,NH1,NH2,NH3   |



# DNH18

## Vertical Fuse Switch

### Technical Parameters

|               |  |
|---------------|--|
| Rated Current | 16A,32A,63A,100A,125A,160A,200A,250A,315A,400A,500A,630A |
| Rated Voltage | AC400V/690V,DC500V                                       |
| Pole          | 3-pole   |
|               | Copper T3  |
|               | Multiple frame sizes & installation types                |
|               | Flame retardant grade V0                                 |
|               | For fuse NH00,NH1,NH2,NH3                                |

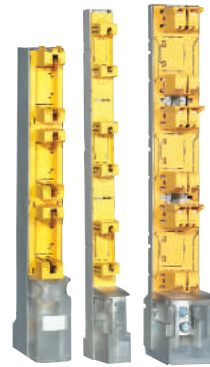


# DNH5

## Vertical Fuse Switch

### Technical Parameters

|               |  |
|---------------|--|
| Rated Current | 16A,32A,63A,100A,125A,160A,200A,250A,315A,400A,500A,630A |
| Rated Voltage | AC400V/690V  |
| Pole          | 3-pole   |
|               | Flame retardant grade V0                                 |
|               | For fuse NH00,NH1,NH2,NH3                                |



# DNTRS

## Vertical Fuse Rail

### Technical Parameters

|               |  |
|---------------|--|
| Rated Current | 100A,125A,160A,200A,250A,315A,400A,500A,630A |
| Rated Voltage | AC400V/690V                                  |
| Pole          | 3-pole                                       |
|               | For fuse NH00,NH1,NH2,NH3                    |
|               | Multiple frame sizes & installation types    |
|               | Flame retardant grade V0                     |

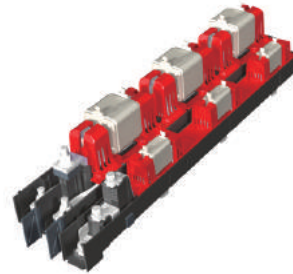


# DNTF2

## Vertical Fuse Rail

### Technical Parameters

|               |  |
|---------------|--|
| Rated Current | 100A,125A,160A,200A,250A,315A,400A,500A,630A |
| Rated Voltage | AC400V/690V                                  |
| Pole          | 3-pole                                       |
|               | For fuse NH00,NH1,NH2,NH3                    |
|               | Multiple frame sizes & installation types    |
|               | Flame retardant grade V0                     |



# DNTF1

## Vertical Fuse Rail

### Technical Parameters

|               |  |
|---------------|--|
| Rated Current | 100A,125A,160A,200A,250A,400A,315A,500A,630A |
| Rated Voltage | AC400V/690V                                  |
| Pole          | 3-pole                                       |
|               | For NH00,NH1,NH2,NH3                         |
|               | Flame retardant grade V0                     |



# RT16

## Fuse Base

### Technical Parameters

|               |  |
|---------------|--|
| Rated Current | 100A, 125A, 160A, 200A, 250A, 315A, 400A, 500A, 630A |
| Rated Voltage | AC400V/690V  |
| Pole          | 1-pole & 3-pole                                      |
|               | For fuse NH00, NH1, NH2, NH3                         |
|               | Flame retardant grade V0                             |



# Mini Type

## Mini Vertical Fuse Switch Disconnecter

### Technical Parameters

|               |   |
|---------------|---|
| Rated Current | 10A, 16A, 32A, 40A, 50A, 63A              |
| Rated Voltage | AC400V/690V, DC500V                       |
| Pole          | 3-pole                                    |
|               | Copper T3                                 |
|               | Multiple frame sizes & installation types |
|               | Flame retardant grade V0                  |
|               | For fuse 10*38mm IEC 60 269-2             |



## 1-Pole Fuse Holder

### Technical Parameters

|               |  |
|---------------|--|
| Rated Current | 10A, 16A, 32A, 40A, 50A, 63A, 80A, 100A        |
| Rated Voltage | AC400V/690V, DC500V                            |
| Pole          | 1-pole   |
|               | Copper T3                                      |
|               | For fuse 10*38mm*/14*51mm/22*58mm IEC 60 269-2 |
|               | Flame retardant grade V0                       |



## 3-Pole Fuse Holder

### Technical Parameters

|               |  |
|---------------|--|
| Rated Current | 10A, 16A, 32A, 40A, 50A, 63A, 80A, 100A        |
| Rated Voltage | AC400V/690V, DC500V                            |
| Pole          | 3-pole   |
|               | Copper T3                                      |
|               | For fuse 10*38mm*/14*51mm/22*58mm IEC 60 269-2 |
|               | Flame retardant grade V0                       |

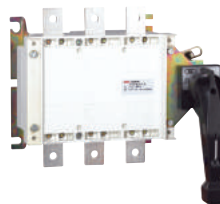


# HGL

Switch Disconnecter

## Technical Parameters

|               |   |
|---------------|---|
| Rated Current | 63A, 100A, 125A, 160A, 200A, 250A, 315A, 400A, 500A, 630A, 800A, 1000A, 1250A, 1600A, 2000A, 2500A, 3150A |
| Rated Voltage | AC400V/690V   |
| Pole          | 3-pole & 4-pole   |
|               | AC-21B&AC-22B   |
|               | Direct front or external operation handle   |
|               | Multiple frame sizes & installation types   |
|               | Flame retardant grade V0  |



# HGCLC

Switch Disconnecter (side operation type )

## Technical Parameters

|               |   |
|---------------|---|
| Rated Current | 63A, 100A, 125A, 160A, 200A, 250A, 315A, 400A, 500A, 630A |
| Rated Voltage | AC400V/690V   |
| Pole          | 3-pole & 4-pole   |
|               | Direct front or external operation handle                 |
|               | Multiple frame sizes & installation types                 |
|               | Flame retardant grade V0                                  |



# HGLTM

Switch Disconnecter (transparent type)

## Technical Parameters

|               |   |
|---------------|---|
| Rated Current | 63A, 100A, 125A, 160A, 200A, 250A, 315A, 400A, 500A, 630A |
| Rated Voltage | AC400V/690V   |
| Pole          | 3-pole & 4-pole   |
|               | Direct front or external operation handle                 |
|               | Multiple frame sizes & installation types                 |
|               | Flame retardant grade V0                                  |



# DNH19

Switch Disconnecter (DC type)

## Technical Parameters

|               |  |
|---------------|--|
| Rated Current | 100A, 125A, 160A, 200A, 250A, 315A, 400A, 500A, 630A, 800A, 1000A, 1250A |
| Rated Voltage | DC1000V/1500V  |
| Pole          | 2-pole & 4-pole  |
|               | Direct front or external operation handle                                |
|               | Multiple frame sizes & installation types                                |
|               | Flame retardant grade V0   |





# QA

## Switch Disconnecter

### Technical Parameters

|               |  |
|---------------|--|
| Rated Current | 63A, 100A, 125A, 160A, 200A, 250A, 315A, 400A, 500A, 630A, 800A, 1000A, 1250A, 1600A |
| Rated Voltage | AC400V/690V  |
| Pole          | 3-pole   |
|               | Direct front or external operation handle  |
|               | Multiple frame sizes & installation types  |
|               | Flame retardant grade V0   |



# QP

## Switch Disconnecter

### Technical Parameters

|               |   |
|---------------|---|
| Rated Current | 63A, 100A, 125A, 160A, 200A, 250A, 315A, 400A, 500A, 630A, 800A, 1000A, 1250A, 1600A, 2500A |
| Rated Voltage | AC400V/690V   |
| Pole          | 3-pole  |
|               | Direct front or external operation handle   |
|               | Multiple frame sizes & installation types   |
|               | Flame retardant grade V0  |



# HGLD

## Automatic Transfer Switch

### Technical Parameters

|               |  |
|---------------|--|
| Rated Current | 63A, 100A, 125A, 160A, 200A, 250A, 315A, 400A, 500A, 630A, 800A, 1000A, 1250A, 1600A, 2500A, 3200A |
| Rated Voltage | AC400V/690V  |
| Pole          | 3-pole & 4-pole  |
|               | Direct front or external operation handle  |
|               | Multiple frame sizes & installation types  |
|               | Flame retardant grade V0   |



# HGLZ

## Manual Transfer Switch

### Technical Parameters

|               |  |
|---------------|--|
| Rated Current | 63A, 100A, 125A, 160A, 200A, 250A, 315A, 400A, 500A, 630A, 800A, 1000A, 1250A, 1600A, 2500A, 3150A |
| Rated Voltage | AC400V/690V  |
| Pole          | 3-pole & 4-pole  |
|               | Direct front or external operation handle  |
|               | Multiple frame sizes & installation types  |
|               | Flame retardant grade V0   |



# Flat Copper Bar

## Flat Copper Bar, 12\*5, Tin-Plating

| Length | Cross Section     | Part No. |
|--------|-------------------|----------|
| 590    | 60mm <sup>2</sup> | DN51382  |
| 790    | 60mm <sup>2</sup> | DN51381  |
| 2400   | 60mm <sup>2</sup> | DN51618  |

## Flat Copper Bar, 12\*10, Tin-Plating

| Length | Cross Section      | Part No. |
|--------|--------------------|----------|
| 590    | 120mm <sup>2</sup> | DN51390  |
| 790    | 120mm <sup>2</sup> | DN51389  |
| 2400   | 120mm <sup>2</sup> | DN51623  |

## Flat Copper Bar, 15\*5, Tin-Plating

| Length | Cross Section     | Part No. |
|--------|-------------------|----------|
| 2400   | 75mm <sup>2</sup> | DN51619  |

## Flat Copper Bar, 20\*10, Tin-Plating

| Length | Cross Section      | Part No. |
|--------|--------------------|----------|
| 590    | 200mm <sup>2</sup> | DN51392  |
| 790    | 200mm <sup>2</sup> | DN51391  |
| 2400   | 200mm <sup>2</sup> | DN51624  |
| 3600   | 200mm <sup>2</sup> | DN51140  |

## Flat Copper Bar, 20\*5, Tin-Plating

| Length | Cross Section      | Part No. |
|--------|--------------------|----------|
| 590    | 100mm <sup>2</sup> | DN51384  |
| 790    | 100mm <sup>2</sup> | DN51383  |
| 2400   | 100mm <sup>2</sup> | DN51620  |

## Flat Copper Bar, 30\*10, Tin-Plating

| Length | Cross Section      | Part No. |
|--------|--------------------|----------|
| 590    | 300mm <sup>2</sup> | DN51394  |
| 790    | 300mm <sup>2</sup> | DN51393  |
| 2400   | 300mm <sup>2</sup> | DN51625  |
| 3600   | 300mm <sup>2</sup> | DN51204  |

## Flat Copper Bar, 25\*5, Tin-Plating

| Length | Cross Section      | Part No. |
|--------|--------------------|----------|
| 2400   | 125mm <sup>2</sup> | DN51621  |

## Flat Copper Bar, 30\*5, Tin-Plating

| Length | Cross Section      | Part No. |
|--------|--------------------|----------|
| 590    | 150mm <sup>2</sup> | DN51388  |
| 790    | 150mm <sup>2</sup> | DN51387  |
| 2400   | 150mm <sup>2</sup> | DN51622  |



# Special Copper Bar

## T Section Copper Bar, 400mm<sup>2</sup>

| Length | Part No. |
|--------|----------|
| 450    | DN51027  |
| 590    | DN51026  |
| 650    | DN51025  |
| 790    | DN51024  |
| 2400   | DN51023  |
| 3600   | DN51000  |

## Triple-T Section Copper Bar, 1140mm<sup>2</sup>

| Length | Part No. |
|--------|----------|
| 453    | DN51188  |
| 590    | DN51400  |
| 650    | DN51189  |
| 790    | DN51399  |
| 2400   | DN51187  |
| 3600   | DN51227  |

## Double-T Section Copper Bar, 500mm<sup>2</sup>

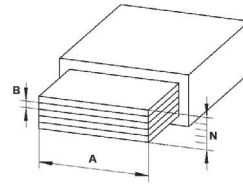
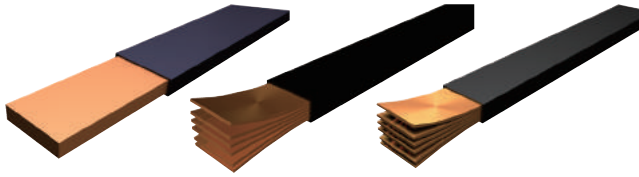
| Length | Part No. |
|--------|----------|
| 450    | DN51225  |
| 590    | DN51396  |
| 650    | DN51226  |
| 790    | DN51395  |
| 2400   | DN51609  |
| 3600   | DN51224  |

## TCC Section Copper Bar, 1600mm<sup>2</sup>

| Length | Part No. |
|--------|----------|
| 492    | DN51377  |
| 692    | DN51378  |
| 2400   | DN51610  |

## Double-T Section Copper Bar, 720mm<sup>2</sup>

| Length | Part No. |
|--------|----------|
| 453    | DN51838  |
| 590    | DN51398  |
| 650    | DN51831  |
| 790    | DN51397  |
| 2400   | DN51608  |
| 3600   | DN51190  |



# Flexible Copper Bar

## 2M, Bare Copper,

Working Temperature: -25°C~105°C

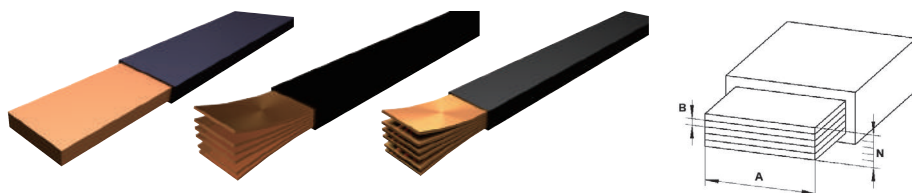
| N, A, B (mm)    | Part No. |
|-----------------|----------|
| 8 x 6 x 0.5     | DN61240  |
| 3 x 9 x 0.8     | DN61241  |
| 6 x 9 x 0.8     | DN61242  |
| 9 x 9 x 0.8     | DN61243  |
| 3 x 13 x 0.5    | DN61244  |
| 6 x 13 x 0.5    | DN61245  |
| 2 x 15.5 x 0.8  | DN61239  |
| 4 x 15.5 x 0.8  | DN61246  |
| 6 x 15.5 x 0.8  | DN61247  |
| 10 x 15.5 x 0.8 | DN61248  |
| 2 x 20 x 1      | DN61249  |
| 3 x 20 x 1      | DN61250  |
| 4 x 20 x 1      | DN61251  |
| 5 x 20 x 1      | DN61252  |
| 6 x 20 x 1      | DN61253  |
| 10 x 20 x 1     | DN61254  |
| 2 x 24 x 1      | DN61255  |
| 3 x 24 x 1      | DN61256  |
| 4 x 24 x 1      | DN61257  |
| 5 x 24 x 1      | DN61258  |
| 6 x 24 x 1      | DN61259  |
| 8 x 24 x 1      | DN61260  |
| 10 x 24 x 1     | DN61261  |
| 2 x 32 x 1      | DN61262  |
| 3 x 32 x 1      | DN61263  |
| 4 x 32 x 1      | DN61264  |
| 5 x 32 x 1      | DN61265  |
| 6 x 32 x 1      | DN61266  |
| 8 x 32 x 1      | DN61267  |
| 10 x 32 x 1     | DN61268  |
| 2 x 40 x 1      | DN61269  |
| 3 x 40 x 1      | DN61270  |
| 4 x 40 x 1      | DN61271  |
| 5 x 40 x 1      | DN61272  |
| 6 x 40 x 1      | DN61273  |
| 8 x 40 x 1      | DN61274  |
| 10 x 40 x 1     | DN61275  |
| 3 x 50 x 1      | DN61276  |
| 4 x 50 x 1      | DN61277  |
| 5 x 50 x 1      | DN61278  |
| 6 x 50 x 1      | DN61279  |
| 8 x 50 x 1      | DN61280  |
| 10 x 50 x 1     | DN61281  |
| 3 x 63 x 1      | DN61282  |

## 2M, Halogen Free,

Working Temperature: -50°C~280°C

| N, A, B (mm) | Part No. |
|--------------|----------|
| 4 x 63 x 1   | DN61283  |
| 5 x 63 x 1   | DN61284  |
| 6 x 63 x 1   | DN61285  |
| 8 x 63 x 1   | DN61286  |
| 10 x 63 x 1  | DN61287  |
| 3 x 80 x 1   | DN61288  |
| 4 x 80 x 1   | DN61289  |
| 5 x 80 x 1   | DN61290  |
| 6 x 80 x 1   | DN61291  |
| 8 x 80 x 1   | DN61292  |
| 10 x 80 x 1  | DN61293  |
| 4 x 100 x 1  | DN61294  |
| 5 x 100 x 1  | DN61295  |
| 6 x 100 x 1  | DN61296  |
| 8 x 100 x 1  | DN61297  |
| 10 x 100 x 1 | DN61298  |
| 12 x 100 x 1 | DN61299  |
| 10 x 120 x 1 | DN61300  |

| N, A, B (mm) | Part No. |
|--------------|----------|
| 2 x 20 x 1   | DN61649  |
| 3 x 20 x 1   | DN61650  |
| 4 x 20 x 1   | DN61651  |
| 5 x 20 x 1   | DN61652  |
| 2 x 24 x 1   | DN61655  |
| 3 x 24 x 1   | DN61656  |
| 4 x 24 x 1   | DN61657  |
| 5 x 24 x 1   | DN61658  |
| 6 x 24 x 1   | DN61659  |
| 3 x 32 x 1   | DN61663  |
| 4 x 32 x 1   | DN61664  |
| 5 x 32 x 1   | DN61665  |
| 6 x 32 x 1   | DN61666  |
| 8 x 32 x 1   | DN61667  |
| 5 x 40 x 1   | DN61672  |
| 6 x 40 x 1   | DN61673  |
| 10 x 40 x 1  | DN61675  |
| 5 x 50 x 1   | DN61678  |
| 8 x 50 x 1   | DN61680  |
| 10 x 50 x 1  | DN61681  |



# Flexible Copper Bar

## 3M, Bare Copper,

Working Temperature: -25°C~105°C

| N, A, B (mm)   | Part No. |
|----------------|----------|
| 6 x 9 x 0.8    | DN61102  |
| 4 x 15.5 x 0.8 | DN61106  |
| 6 x 15.5 x 0.8 | DN61107  |
| 2 x 20 x 1     | DN61109  |
| 3 x 20 x 1     | DN61110  |
| 4 x 20 x 1     | DN61111  |
| 2 x 24 x 1     | DN61115  |
| 3 x 24 x 1     | DN61116  |
| 4 x 24 x 1     | DN61117  |
| 5 x 24 x 1     | DN61118  |
| 3 x 32 x 1     | DN61123  |
| 4 x 32 x 1     | DN61124  |
| 5 x 32 x 1     | DN61125  |
| 6 x 32 x 1     | DN61126  |
| 8 x 32 x 1     | DN61127  |
| 3 x 40 x 1     | DN61130  |
| 5 x 40 x 1     | DN61132  |
| 5 x 50 x 1     | DN61138  |

## 3M, Tin Plating,

Working Temperature: -25°C~105°C

| N, A, B (mm)   | Part No. |
|----------------|----------|
| 6 x 9 x 0.8    | DN61432  |
| 2 x 15.5 x 0.8 | DN61433  |
| 4 x 15.5 x 0.8 | DN61436  |
| 6 x 15.5 x 0.8 | DN61437  |
| 2 x 20 x 1     | DN61439  |
| 3 x 20 x 1     | DN61440  |
| 4 x 20 x 1     | DN61441  |
| 5 x 20 x 1     | DN61442  |
| 2 x 24 x 1     | DN61445  |
| 3 x 24 x 1     | DN61446  |
| 4 x 24 x 1     | DN61447  |
| 5 x 24 x 1     | DN61448  |
| 6 x 24 x 1     | DN61449  |
| 8 x 24 x 1     | DN61450  |
| 3 x 32 x 1     | DN61453  |
| 4 x 32 x 1     | DN61454  |
| 5 x 32 x 1     | DN61455  |
| 6 x 32 x 1     | DN61456  |
| 8 x 32 x 1     | DN61457  |
| 10 x 32 x 1    | DN61458  |
| 3 x 40 x 1     | DN61460  |
| 4 x 40 x 1     | DN61461  |
| 5 x 40 x 1     | DN61462  |
| 5 x 50 x 1     | DN61468  |
| 8 x 50 x 1     | DN61470  |
| 5 x 63 x 1     | DN61474  |
| 8 x 63 x 1     | DN61476  |



# 60mm Universal Busbar Adapter

## Universal Busbar Adapter, 160A, 3-pole, 60mm

| Adaptation                  | Width | Length | Part No. |
|-----------------------------|-------|--------|----------|
| Top connection to system    | 90    | 224.5  | DN55160  |
| Bottom connection to system | 90    | 224.5  | DN55017  |

## Universal Busbar Adapter, 570A, 3-pole, 60mm

| Adaptation                      | Width | Length | Part No. |
|---------------------------------|-------|--------|----------|
| Top/Bottom connection to system | 184   | 323    | DN55909  |
| Mounting Plate                  | 184   | 323    | DN55910  |

## Universal Busbar Adapter, 250A, 3-pole, 60mm

| Adaptation                  | Width | Length | Part No. |
|-----------------------------|-------|--------|----------|
| Top connection to system    | 109   | 267.5  | DN55250  |
| Top connection to system    | 108   | 223.5  | DN55214  |
| Top connection to system    | 111   | 320    | DN55168  |
| Bottom connection to system | 109   | 267.5  | DN55018  |

## Universal Busbar Adapter, 630A, 3-pole, 60mm

| Adaptation               | Width | Length | Part No. |
|--------------------------|-------|--------|----------|
| Top connection to system | 140   | 322    | DN55009  |
| Top connection to system | 140   | 322    | DN55042  |

## Universal Busbar Adapter, 400A, 3-pole, 60mm

| Adaptation               | Width | Length | Part No. |
|--------------------------|-------|--------|----------|
| Top connection to system | 140   | 322    | DN55630  |
| Top connection to system | 140   | 322    | DN55019  |



DN55037



DN55157

# 60mm Special Busbar Adapter

## Busbar Adapter,160A,3-pole,60mm, Top Connection To System

| Adaptation   | Width | Length | Part No. |
|--------------|-------|--------|----------|
| ABB T1       | 90    | 224.5  | DN55069  |
| ABB T2-160A  | 90    | 224.5  | DN55063  |
| Siemens 3VT1 | 90    | 224.5  | DN55083  |

## Busbar Adapter,570A,3-pole,60mm, Top Connection To System

| Adaptation        | Width | Length | Part No. |
|-------------------|-------|--------|----------|
| Schneider NSX-630 | 140   | 270    | DN55157  |

## Busbar Adapter,250A,3-pole,60mm, Top Connection To System

| Adaptation                 | Width | Length | Part No. |
|----------------------------|-------|--------|----------|
| ABB Tmax T3                | 109   | 267.5  | DN55181  |
| ABB Tmax T4<br>Siemens 3VT | 105   | 240    | DN55008  |
| Schneider NSX-250          | 109   | 267.5  | DN55037  |
| Siemens 3VA2               | 109   | 267.5  | DN55162  |
| Siemens 3VT8               | 109   | 267.5  | DN55159  |

## Busbar Adapter,580A,3-pole,60mm, Top Connection To System

| Adaptation  | Width | Length | Part No. |
|-------------|-------|--------|----------|
| ABB Tmax T5 | 140   | 300    | DN55593  |

## Busbar Adapter,400A,3-pole,60mm, Top Connection To System

| Adaptation                 | Width | Length | Part No. |
|----------------------------|-------|--------|----------|
| ABB Tmax T5                | 140.5 | 327    | DN55073  |
| Schneider<br>NSX-630(400A) | 140.5 | 327    | DN55075  |



DN55157



DN55158

# 60mm Special Busbar Adapter

## Busbar Adapter,160A,3-pole,60mm, Bottom Connection To System

| Adaptation   | Width | Length | Part No. |
|--------------|-------|--------|----------|
| ABB T1       | 90    | 224.5  | DN55070  |
| ABB T2-160A  | 90    | 224.5  | DN55064  |
| Siemens 3VT1 | 90    | 224.5  | DN55084  |

## Busbar Adapter,570A,3-pole,60mm, Bottom Connection To System

| Adaptation        | Width | Length | Part No. |
|-------------------|-------|--------|----------|
| Schneider NSX-400 | 140   | 270    | DN55157  |

## Busbar Adapter,250A,3-pole,60mm, Bottom Connection To System

| Adaptation                  | Width | Length | Part No. |
|-----------------------------|-------|--------|----------|
| ABB Tmax T3                 | 109   | 267.5  | DN55158  |
| ABB Tmax T4<br>Siemens 3VT8 | 105   | 240    | DN55601  |
| Schneider NSX-250           | 109   | 267.5  | DN55039  |
| Siemens 3VA2                | 109   | 267.5  | DN55163  |
| Siemens 3VT8                | 109   | 267.5  | DN55161  |

## Busbar Adapter,580A,3-pole,60mm, Bottom Connection To System

| Adaptation  | Width | Length | Part No. |
|-------------|-------|--------|----------|
| ABB Tmax T5 | 140   | 300    | DN55043  |

## Busbar Adapter,400A,3-pole,60mm, Bottom Connection To System

| Adaptation                 | Width | Length | Part No. |
|----------------------------|-------|--------|----------|
| ABB Tmax T5                | 140.5 | 327    | DN55074  |
| Schneider<br>NSX-630(400A) | 140.5 | 327    | DN55076  |





DN55006



DN55041

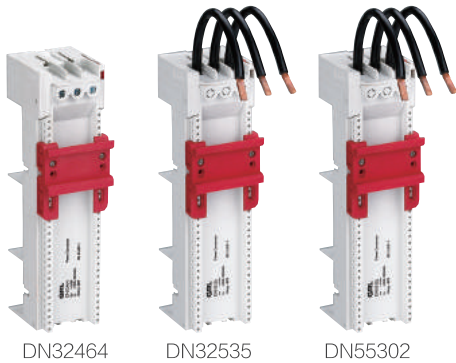
# 185mm Special Busbar Adapter

## Busbar Adapter,400A,3-pole,185mm, Top Connection To System

| Adaptation                       | Width | Length | Part No. |
|----------------------------------|-------|--------|----------|
| ABB Tmax T5<br>Schneider NSX-400 | 140   | 441.5  | DN55006  |

## Busbar Adapter,400A,3-pole,185mm, Bottom Connection To System

| Adaptation                       | Width | Length | Part No. |
|----------------------------------|-------|--------|----------|
| ABB Tmax T5<br>Schneider NSX-400 | 140   | 441.5  | DN55041  |



# MCB Busbar Adapter 1 Support

## MCB Adapter,16A,3-pole,1 Support

| Cable Specification | W*L    | Cable     | Part No. |
|---------------------|--------|-----------|----------|
| 2.5mm <sup>2</sup>  | 45*200 | With Wire | DN55320  |
| 2.5mm <sup>2</sup>  | 45*260 | With Wire | DN 55321 |
| 2.5mm <sup>2</sup>  | 45*200 | Optional  | DN55350  |
| 2.5mm <sup>2</sup>  | 45*260 | Optional  | DN55352  |

## MCB Adapter,25A,3-pole,1 Support

| Cable Specification | W*L    | Cable     | Part No. |
|---------------------|--------|-----------|----------|
| 4mm <sup>2</sup>    | 45*200 | With Wire | DN55322  |
| 4mm <sup>2</sup>    | 45*260 | With Wire | DN55323  |
| 4mm <sup>2</sup>    | 90*200 | With Wire | DN55324  |
| 4mm <sup>2</sup>    | 45*200 | Optional  | DN55354  |
| 4mm <sup>2</sup>    | 45*260 | Optional  | DN55356  |
| 4mm <sup>2</sup>    | 90*200 | Optional  | DN55358  |

## MCB Adapter,63A,3-pole,1 Support

| Cable Specification | W*L    | Cable     | Part No. |
|---------------------|--------|-----------|----------|
| 10mm <sup>2</sup>   | 54*200 | With Wire | DN55302  |
| 10mm <sup>2</sup>   | 54*260 | With Wire | DN55303  |
| 10mm <sup>2</sup>   | 63*200 | With Wire | DN55314  |
| 10mm <sup>2</sup>   | 72*200 | With Wire | DN55315  |
| 10mm <sup>2</sup>   | 81*200 | With Wire | DN55316  |
| 10mm <sup>2</sup>   | 63*260 | With Wire | DN55317  |
| 10mm <sup>2</sup>   | 72*260 | With Wire | DN55318  |
| 10mm <sup>2</sup>   | 81*260 | With Wire | DN55319  |

## MCB Adapter,32A,3-pole,1 Support

| Cable Specification | W*L    | Cable     | Part No. |
|---------------------|--------|-----------|----------|
| 6mm <sup>2</sup>    | 45*200 | Optional  | DN55304  |
| 6mm <sup>2</sup>    | 45*260 | Optional  | DN55305  |
| 6mm <sup>2</sup>    | 45*200 | With Wire | DN55306  |
| 6mm <sup>2</sup>    | 45*260 | With Wire | DN55307  |
| 6mm <sup>2</sup>    | 54*200 | Optional  | DN55360  |
| 6mm <sup>2</sup>    | 54*260 | Optional  | DN55362  |
| 6mm <sup>2</sup>    | 54*200 | With Wire | DN55364  |
| 6mm <sup>2</sup>    | 54*260 | With Wire | DN55366  |
| 6mm <sup>2</sup>    | 63*200 | With Wire | DN55368  |
| 6mm <sup>2</sup>    | 72*200 | With Wire | DN55370  |
| 6mm <sup>2</sup>    | 81*200 | With Wire | DN55372  |
| 6mm <sup>2</sup>    | 63*260 | With Wire | DN55374  |
| 6mm <sup>2</sup>    | 72*260 | With Wire | DN55376  |
| 6mm <sup>2</sup>    | 81*260 | With Wire | DN55378  |

## MCB Adapter,80A,3-pole,1 Support

| Cable Specification | W*L    | Cable    | Part No. |
|---------------------|--------|----------|----------|
| 16mm <sup>2</sup>   | 54*200 | Optional | DN55300  |
| 16mm <sup>2</sup>   | 54*260 | Optional | DN55301  |
| 16mm <sup>2</sup>   | 63*200 | Optional | DN55308  |
| 16mm <sup>2</sup>   | 72*200 | Optional | DN55309  |
| 16mm <sup>2</sup>   | 81*200 | Optional | DN55310  |
| 16mm <sup>2</sup>   | 63*260 | Optional | DN55311  |
| 16mm <sup>2</sup>   | 72*260 | Optional | DN55312  |
| 16mm <sup>2</sup>   | 81*260 | Optional | DN55313  |



# MCB Busbar Adapter, 2 Supports

## MCB Adapter,16A,3-pole,2 Supports

| Cable Specification | W*L    | Cable     | Part No. |
|---------------------|--------|-----------|----------|
| 2.5mm <sup>2</sup>  | 45*200 | With Wire | DN55345  |
| 2.5mm <sup>2</sup>  | 45*260 | With Wire | DN55346  |
| 2.5mm <sup>2</sup>  | 45*200 | Optional  | DN55351  |
| 2.5mm <sup>2</sup>  | 45*260 | Optional  | DN55353  |

## MCB Adapter,25A,3-pole,2 Supports

| Cable Specification | W*L    | Cable     | Part No. |
|---------------------|--------|-----------|----------|
| 4mm <sup>2</sup>    | 45*200 | With Wire | DN55347  |
| 4mm <sup>2</sup>    | 45*260 | With Wire | DN55348  |
| 4mm <sup>2</sup>    | 90*200 | With Wire | DN55349  |
| 4mm <sup>2</sup>    | 45*200 | Optional  | DN55355  |
| 4mm <sup>2</sup>    | 45*260 | Optional  | DN55357  |
| 4mm <sup>2</sup>    | 90*200 | Optional  | DN55359  |

## MCB Adapter,63A,3-pole,2 Supports

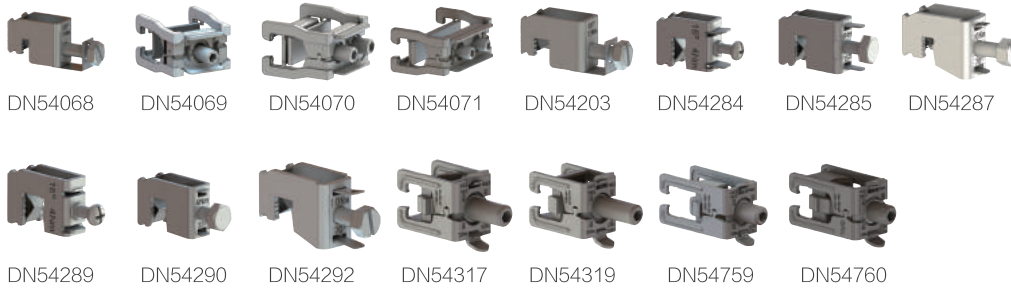
| Cable Specification | W*L    | Cable     | Part No. |
|---------------------|--------|-----------|----------|
| 10mm <sup>2</sup>   | 54*200 | With Wire | DN55327  |
| 10mm <sup>2</sup>   | 54*260 | With Wire | DN55328  |
| 10mm <sup>2</sup>   | 63*200 | With Wire | DN55339  |
| 10mm <sup>2</sup>   | 72*200 | With Wire | DN55340  |
| 10mm <sup>2</sup>   | 81*200 | With Wire | DN55341  |
| 10mm <sup>2</sup>   | 63*260 | With Wire | DN55342  |
| 10mm <sup>2</sup>   | 72*260 | With Wire | DN55343  |
| 10mm <sup>2</sup>   | 81*260 | With Wire | DN55344  |

## MCB Adapter,32A,3-pole,2 Supports

| Cable Specification | W*L    | Cable     | Part No. |
|---------------------|--------|-----------|----------|
| 6mm <sup>2</sup>    | 45*200 | Optional  | DN55329  |
| 6mm <sup>2</sup>    | 45*260 | Optional  | DN55330  |
| 6mm <sup>2</sup>    | 45*200 | With Wire | DN55331  |
| 6mm <sup>2</sup>    | 45*260 | With Wire | DN55332  |
| 6mm <sup>2</sup>    | 54*200 | Optional  | DN55361  |
| 6mm <sup>2</sup>    | 54*260 | Optional  | DN55363  |
| 6mm <sup>2</sup>    | 54*200 | With Wire | DN55365  |
| 6mm <sup>2</sup>    | 54*260 | With Wire | DN55367  |
| 6mm <sup>2</sup>    | 63*200 | With Wire | DN55369  |
| 6mm <sup>2</sup>    | 72*200 | With Wire | DN55371  |
| 6mm <sup>2</sup>    | 81*200 | With Wire | DN55373  |
| 6mm <sup>2</sup>    | 63*260 | With Wire | DN55375  |
| 6mm <sup>2</sup>    | 72*260 | With Wire | DN55377  |
| 6mm <sup>2</sup>    | 81*260 | With Wire | DN55379  |

## MCB Adapter,80A,3-pole,2 Supports

| Cable Specification | W*L    | Cable    | Part No. |
|---------------------|--------|----------|----------|
| 16mm <sup>2</sup>   | 54*200 | Optional | DN55325  |
| 16mm <sup>2</sup>   | 54*260 | Optional | DN55326  |
| 16mm <sup>2</sup>   | 63*200 | Optional | DN55333  |
| 16mm <sup>2</sup>   | 72*200 | Optional | DN55334  |
| 16mm <sup>2</sup>   | 81*200 | Optional | DN55335  |
| 16mm <sup>2</sup>   | 63*260 | Optional | DN55336  |
| 16mm <sup>2</sup>   | 72*260 | Optional | DN55337  |
| 16mm <sup>2</sup>   | 81*260 | Optional | DN55338  |



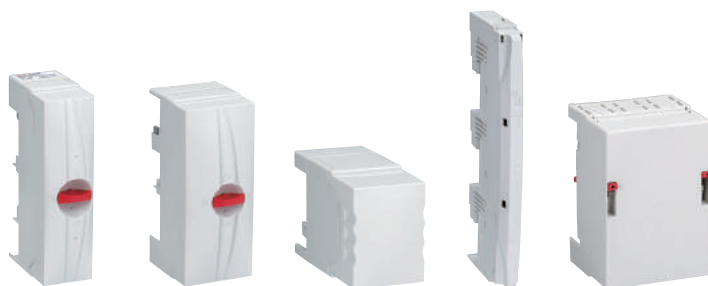
# Connector Terminal

| Max Current (A) | Applicable Copper Bar                             | Applicable Copper Bar (Cable)      | Opening Space | Part No. |
|-----------------|---|------------------------------------|---------------|----------|
| 180             | 5mm Flat Copper Bar                               | 1.5-16 mm <sup>2</sup> , AWG14-6   | /             | DN54284  |
| 180             | 10mm Flat Copper Bar                              | 1,5-16mm <sup>2</sup> ,AWG14-6     | /             | DN54289  |
| 270             | 5mm Flat Copper Bar                               | 4-35mm <sup>2</sup> ,AWG10-2       | /             | DN54285  |
| 270             | 10mm Flat Copper Bar                              | 4-35mm <sup>2</sup> ,AWG10-2       | /             | DN54290  |
| 400             | 5mm Flat Copper Bar                               | 16-70mm <sup>2</sup> ,AWG14-2/0    | /             | DN54287  |
| 400             | 10mm Flat Copper Bar & Special Section Copper Bar | 16-70mm <sup>2</sup> ,AWG14-2/0    | /             | DN54292  |
| 440             | 5mm Flat Copper Bar                               | 16-120mm <sup>2</sup> /AWG4-MCM250 | /             | DN54608  |
| 440             | 10mm Flat Copper Bar & Special Section Copper Bar | 16-120mm <sup>2</sup> /AWG4-MCM250 | /             | DN54203  |

| Max Current (A) | Applicable Copper Bar   | Applicable Copper Bar (Cable) | Opening Space | Part No. |
|-----------------|---|-------------------------------|---------------|----------|
| 1600            | 30 × 10mm Flat Copper Bar & Special Copper Bar                  | /                             | 55 × 10-128   | DN54069  |
| 1600            | 30 × 10mm Flat Copper Bar & Special Section Copper Bar          | /                             | 68 × 10-28    | DN54070  |
| 1600            | 30 × 10mm Flat Copper Bar & Special Section Copper Bar          | /                             | 105 × 10-28   | DN54071  |
| 750             | 20, 25,30 × 5,10mm Flat Copper Bar & Special Section Copper Bar | Flat copper bar 30 × 20       | /             | DN54319  |
| 800             | 20, 25,30 × 5,10mm Flat Copper Bar & Special Section Copper Bar | Flat copper bar 30 × 20       | /             | DN54759  |

| Max Current (A) | Applicable Copper Bar   | Applicable Copper Bar (Cable)   | Opening Space | Part No. |
|-----------------|---|---------------------------------|---------------|----------|
| 500             | 20,25, 30 x 5,10mm Flat Copper Bar & Special Section Copper Bar | Cu/Al 95-185mm <sup>2</sup>     | /             | DN54317  |
| 600             | 20,25,30 × 5,10mm Flat Copper Bar & Special Section Copper Bar  | Cu / Al 95 - 300mm <sup>2</sup> | /             | DN54760  |

| Max Current (A)          | Applicable Copper Bar  | Opening Space | Part No. |
|--------------------------|--|---------------|----------|
| Side:1600A, Middle:1600A | Double-T Section Copper Bar, 320-800mm <sup>2</sup>  | 41 × 20-42    | DN54905  |
| Side:1600A, Middle:1600A | Double-T Section Copper Bar, 500-750mm <sup>2</sup>  | 51 × 5-28     | DN54906  |
| Side:1600A, Middle:1600A | Double-T Section Copper Bar, 600-900mm <sup>2</sup>  | 64 × 5-28     | DN54907  |
| 630A                     | 30 × 10 Flat Copper Bar,Double-T Section Copper Bar And Triple-T Section Cooper Bar, 95-300mm <sup>2</sup> | /             | DN54094  |
| 1250A                    | Flat Copper Bar,Max:40 × 20  | /             | DN54092  |
| 1600A                    | Double-T Section Copper Bar, Length:50mm, Spacing:9-20mm   | /             | DN54827  |
| 1600A                    | Double-T Section Copper Bar, Length:95mm, Spacing:50-60mm  | /             | DN54145  |
| 1600A                    | Double-T Section Copper Bar, Length:150mm, Spacing:100-110mm   | /             | DN54829  |
| 2500A                    | Triple-T Section Copper Bar, Length:95mm, Spacing:50-60mm  | /             | DN54274L |
| 2500A                    | Triple-T Section Copper Bar, Length:150mm, Spacing:100-110mm   | /             | DN54275L |



DN54240

DN54243

DN54318

DN54563

DN54753

# Terminal Clamp Board

## Universal Terminal Clamp Board, 1-pole

| Max Current | Connection             | Applicable Copper Bar   | Cover | Part No. |
|-------------|------------------------|---|-------|----------|
| 500A        | 95–185mm <sup>2</sup>  | 12 * 5 -30 * 5、10mm, T,Double-T And Triple-T Section Copper Bar | With  | DN54318  |
| 600A        | 120–300mm <sup>2</sup> | 12 * 5 -30 * 5、10mm, T,Double-T And Triple-T Section Copper Bar | With  | DN54761  |

## Terminal Clamp Board, 60mm,3-pole

| Max Current | Connection                                | Applicable Copper Bar  | Cover                                     | Part No. |
|-------------|---|--|---|----------|
| 80A         | 1.6–16mm <sup>2</sup>                     | 12 * 5 -30 * 5、10mm, T, Double-T And Triple-T Section Copper Bar | With Touch Protection And Spring Terminal | DN54563  |
| 300A        | 60–50mm <sup>2</sup>                      | 12 * 5 -30 * 5、10mm, T, Double-T And Triple-T Section Copper Bar | With                                      | DN54240  |
| 440A        | 35–120mm <sup>2</sup>                     | 12 * 5 -30 * 5、10mm, T, Double-T And Triple-T Section Copper Bar | With                                      | DN54243  |
| 460A        | 95–185mm <sup>2</sup>                     | 12 * 5 -30 * 5、10mm, T, Double-T And Triple-T Section Copper Bar | With                                      | DN54199  |
| 560A        | 120–300mm <sup>2</sup>                    | 12 * 5 -30 * 5、10mm, T, Double-T And Triple-T Section Copper Bar | Without                                   | DN54537  |
| 560A        | 120–300mm <sup>2</sup>                    | 12 * 5 -30 * 5、10mm, T, Double-T And Triple-T Section Copper Bar | With                                      | DN54754  |
| 800A        | 30 * 20mm Multi-Layer Flexible Copper Bar | 12 * 5 -30 * 5、10mm, T, Double-T And Triple-T Section Copper Bar | With                                      | DN54753  |
| 800A        | Max 32–20mm Flat Copper Bar               | 12 * 5 -30 * 5、10mm, T, Double-T And Triple-T Section Copper Bar | Without                                   | DN54538  |

## Terminal Clamp Board, 60mm,4-pole

| Max Current | Connection                  | Applicable Copper Bar                                      | Cover   | Part No. |
|-------------|-----------------------------|--|---------|----------|
| 560A        | 120–300mm <sup>2</sup>      | 12、30 * 5、10mm, T,Double-T And Triple-T Section Copper Bar | Without | DN54147  |
| 800A        | Max 32–20mm Flat Copper Bar | 12、30 * 5、10mm, T,Double-T And Triple-T Section Copper Bar | Without | DN54162  |

## Terminal Clamp Board, 100mm,3-pole

| Max Current | Connection             | Applicable Copper Bar   | Cover | Part No. |
|-------------|------------------------|---|-------|----------|
| 400A        | 120–240mm <sup>2</sup> | 12 * 5 -30 * 5、10mm, T,Double-T And Triple-T Section Copper Bar | With  | DN54100  |
| 630A        | 150–300mm <sup>2</sup> | 12 * 5 -30 * 5、10mm, T,Double-T And Triple-T Section Copper Bar | With  | DN54101  |

## Terminal Clamp Board, 185mm,3-pole

| Max Current | Connection             | Applicable Copper Bar   | Cover | Part No. |
|-------------|------------------------|---|-------|----------|
| 400A        | 120–240mm <sup>2</sup> | 12 * 5 -30 * 5、10mm, T,Double-T And Triple-T Section Copper Bar | With  | DN54185  |
| 400A        | 120–240mm <sup>2</sup> | 12 * 5 -30 * 5、10mm, T,Double-T And Triple-T Section Copper Bar | With  | DN54187  |
| 630A        | 150–300mm <sup>2</sup> | 12 * 5 -30 * 5、10mm, T,Double-T And Triple-T Section Copper Bar | With  | DN54186  |
| 630A        | 150–300mm <sup>2</sup> | 12 * 5 -30 * 5、10mm, T,Double-T And Triple-T Section Copper Bar | With  | DN54188  |



# Busbar Support

## Universal Busbar Support, 1-pole

| Applicable Copper Bar              | Part No. |
|------------------------------------|----------|
| Double-T Section Copper Bar        | DN52116  |
| 12, 20, 30 * 5, 10 Flat Copper Bar | DN52601  |

## Universal Busbar Support, 2-pole, 60mm

| Applicable Copper Bar              | Part No. |
|------------------------------------|----------|
| 12, 20, 30 * 5, 10 Flat Copper Bar | DN52356  |
| 12, 20, 30 * 5, 10 Flat Copper Bar | DN52602  |

## Universal Busbar Support, 3-pole , 60mm

| Applicable Copper Bar   | Part No. |
|---|----------|
| 12, 15, 20, 25, 30 * 10 Flat Copper Bar   | DN52495  |
| 12, 15, 20, 25, 30 * 5 Flat Copper Bar  | DN52002  |
| 12, 15, 20, 25, 30 * 10 Flat Copper Bar   | DN52500  |
| 12, 15, 20, 25, 30 * 5 Flat Copper Bar  | DN52005  |
| 12, 15, 20, 25, 30 * 10 Flat Copper Bar With Integrated Terminal 1.5-16 mm <sup>2</sup> | DN52484  |
| 12, 15, 20, 25, 30 * 5 Flat Copper Bar With Integrated Terminal 1.5-16 mm <sup>2</sup>  | DN52009  |
| 12, 20, 30 * 5, 10 Flat Copper Bar  | DN52508  |
| Double-T Section Copper Bar   | DN52231  |
| Triple-T Section Copper Bar   | DN52232  |
| 30 * 10 Flat Copper Bar & T - Section Copper Bar  | DN52010  |

## Universal Copper Bar Support, 4-pole, 60mm

| Applicable Copper Bar                            | Part No. |
|--|----------|
| 30 * 10 Flat Copper Bar & T - Section Copper Bar | DN52004  |
| 12, 20, 30 * 5, 10 Flat Copper Bar               | DN52357  |
| 12, 15, 20, 25, 30 * 5, 10 Flat Copper Bar       | DN52485  |



DN52001

DN52479

# Busbar Support

## Universal Busbar Support, 3-pole , 100mm

| Applicable Copper Bar            | Part No. |
|----------------------------------|----------|
| 30、40、50、60 * 10 Flat Copper Bar | DN52479  |

## Universal Busbar Support, 3-pole, 185mm

| Applicable Copper Bar                 | Part No. |
|---------------------------------------|----------|
| 30-120 * 5 Flat Copper Bar            | DN52001  |
| 30-120 * 10 Flat Copper Bar           | DN52230  |
| 30-120 * 5/10 Punched Flat Copper Bar | DN52742  |



## **ZHEJIANG GRL ELECTRIC CO.,LTD.**

Add:No 246,Weishi Road,Yueqing Economic  
Development Zone,Zhejiang PR,China  
Tel: 86-577-62690055 Fax: 86-577-62702791

Website: [www.fusesbase.com](http://www.fusesbase.com)

E-mail: [sales@grlele.com](mailto:sales@grlele.com)

---

This product manual is printed by GRL .It is only used to explain the relevant information of this series of products.The information might be updated base on the technical upgrade or update, GRL holds the right to update the manual without prior notice. Welcome to contact GRL for more details.

---

GRL Electric All Rights Reserved.

G19A02

Design by YAD